



OPALINE GLASS GLOBE PENDANT LIGHT 50CM - POLISHED FINISH

£380.00



SKU: 1323

Stock: In Stock

Weight: 4.7 Kg

Height: 64 cm

Diameter: 50

Categories: [Pendant Lights](#), [Glass](#)

Tags: [Bars & Restaurants](#), [Commercial Lighting](#), [Glass Lighting](#), [Home Lighting](#), [Kitchen & Dining](#), [Living Areas & Bedrooms](#), [Office & Workspace](#), [Public Buildings & Retail](#)

PRODUCT DESCRIPTION

A large [opaline glass](#) globe pendant light based closely on the early 20thC original design.

Blown by hand in a traditional glass foundry to give the classic warm opaline glow. [See more.](#)

At 50cm in diameter these lights lie at the very limits of what can be blown by hand. They can only be produced in small batches by the most experienced glass blowers in our foundry.

A bespoke 'monks-cap' fitting compliments the clean lines of the glass.

Metalwork is in a polished finish.

- Wired as standard with 1.5m braided flex. Please specify if you need longer lengths.
- E27 Bulbholder.

Trainspotters

T: +44 (0)1453 756677

E: info@trainspotters.co.uk

W: www.trainspotters.co.uk

- Max 60w, LED bulbs recommended.
- Supplied fully assembled and tested to CE & BS EN 60598 standards.
- Wiring options also available for US & Canada.
- Free Mainland UK Delivery (Excess applies to Palletised or Special Services)
- 2 Year Warranty (T&C's Apply)

CURRENT LEAD TIME - 8 WEEKS APPROX

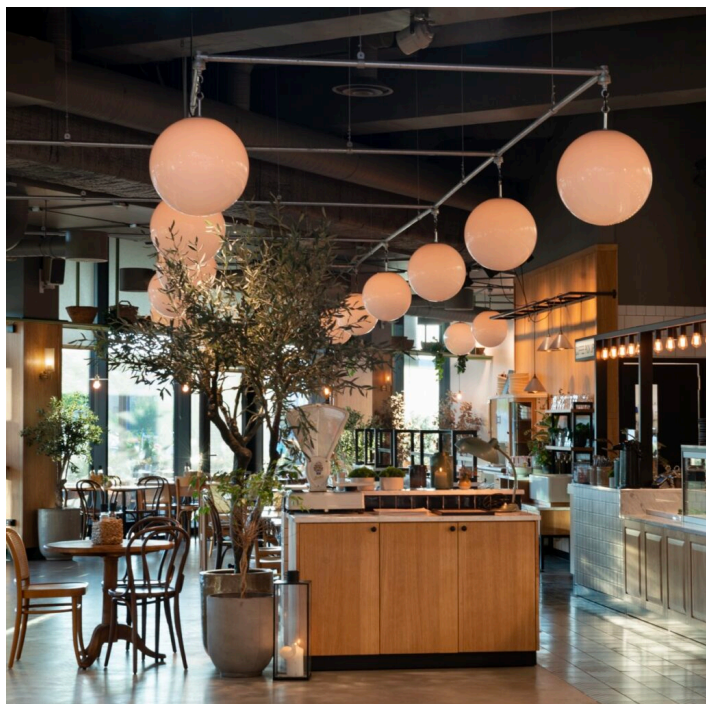


Trainspotters

T: +44 (0)1453 756677

E: info@traispotters.co.uk

W: www.trainspotters.co.uk



1